

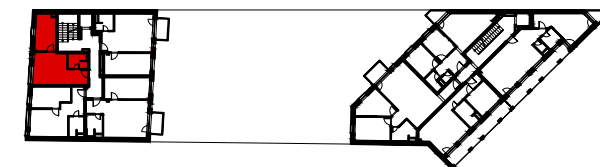
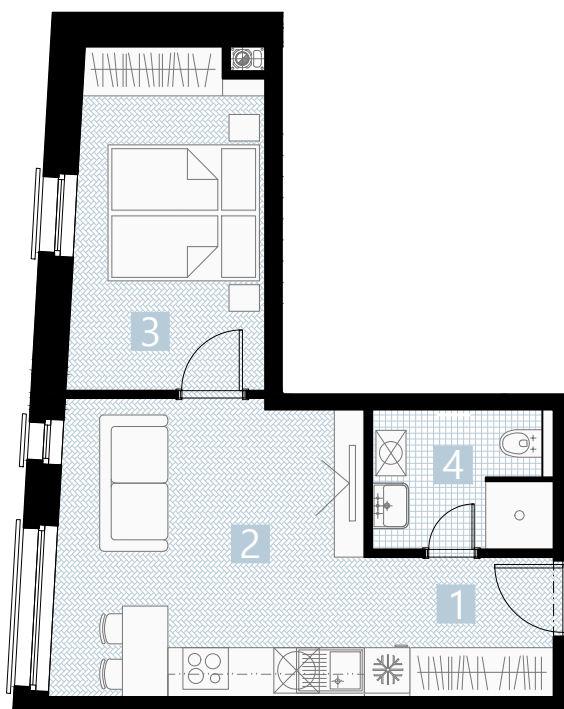


APARTMÁN 6A-L / APARTMENT 6A-L

2 izbový apartmán / 2 rooms apartment

1. vstupná predsieň	/ lobby	0 5 , 1 6 m ²
2. kuchyňa + obyv.izba	/ kitchen + room	1 6 , 6 4 m ²
3. spálňa	/ bedroom	1 1 , 5 1 m ²
4. kúpeľňa	/ bathroom	0 4 , 4 4 m ²

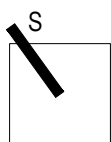
CELKOVÁ PLOCHA / TOTAL 37,76 m²



s ch é m a p ô d o r y s u 2 . N P
/ s c h e m e o f t h e s e c o n d f l o o r



s c h é m a t i c n ý r e z o b j e k t o m



0 1 2 3 4 5 6 M 1:100

I pôdorys je spracovaný na marketingové účely I zariadenie predmety a ich rozmiestnenie má len ilustračný charakter
I floor plan is processed for marketing purposes I furniture and its placement is only for illustration

vigroup

Rohička 157, 831 07 Bratislava
www.vigroup.sk