

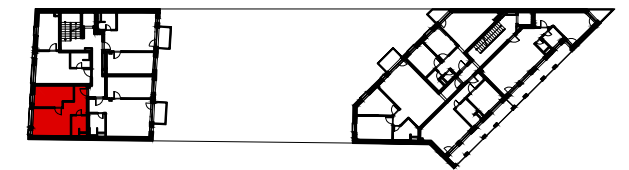
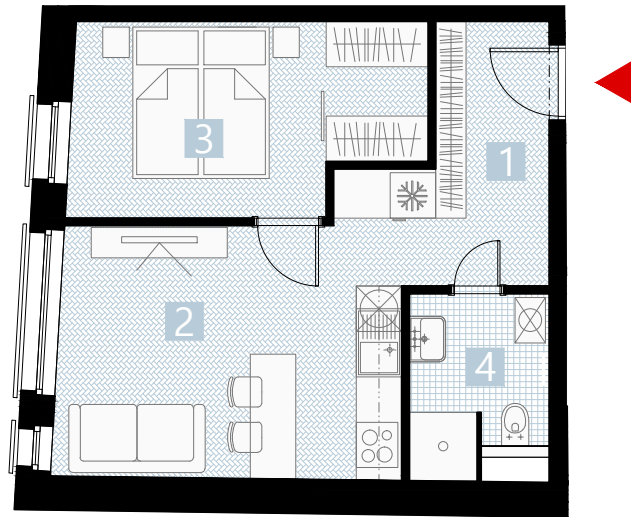


# APARTMÁN 9A-L / APARTMENT 9A-L

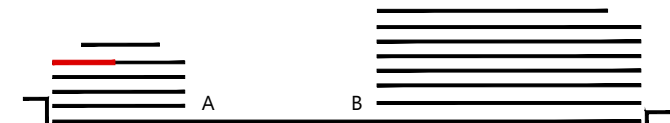
2 izbový apartmán / 2 rooms apartment

1. vstupná predsieň	/ lobby	0 5 , 3 4 m <sup>2</sup>
2. kuchyňa + obyv.izba	/ kitchen + room	1 6 , 8 3 m <sup>2</sup>
3. spálňa	/ bedroom	1 1 , 3 5 m <sup>2</sup>
4. kúpeľňa	/ bathroom	0 4 , 7 1 m <sup>2</sup>

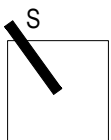
**CELKOVÁ PLOCHA / TOTAL 38,22 m<sup>2</sup>**



s ch é m a p ô d o r y s u 3 . N P  
/ s c h e m e o f t h e t h i r d f l o o r



s c h é m a t i c n ý r e z o b j e k t o m



0 1 2 3 4 5 6 M 1:100

I pôdorys je spracovaný na marketingové účely I zariadenie predmety a ich rozmiestnenie má len ilustračný charakter  
I floor plan is processed for marketing purposes I furniture and its placement is only for illustration

vigroup

Rohčická 157, 831 07 Bratislava  
www.vigroup.sk