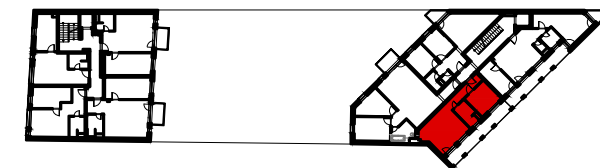


# APARTMÁN 10B-L / APARTMENT 10B-L

2 izbový apartmán/ 2 rooms apartment

1. vstupná predsieň	/ lobby	0 5 , 9 3	m <sup>2</sup>
2. kuchyňa + obyv.izba	/ kitchen + room	2 0 , 7 3	m <sup>2</sup>
3. spálňa	/ bedroom	1 0 , 1 6	m <sup>2</sup>
4. kúpeľňa	/ bathroom	0 5 , 7 1	m <sup>2</sup>
5. zimná záhrada	/ winter garden	1 5 , 0 9	m <sup>2</sup>

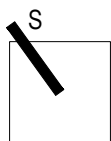
**CELKOVÁ PLOCHA / TOTAL 42,53 m<sup>2</sup>**



s c h é m a p ô d o r y s u 4 . N P  
/ s c h e m e o f t h e f o u r t h f l o o r



s c h e m a t i c k ý r e z o b j e k t o m



0 1 2 3 4 5 6 M 1:100

I pôdorys je spracovaný na marketingové účely I zariadenie predmety a ich rozmiestnenie má len ilustračný charakter  
I floor plan is processed for marketing purposes I furniture and its placement is only for illustration